

Best of Yokohama – What could you do in 2 days! –

Stay in Yokohama and experience the city's spectacular natural resources and traditional Japanese culture! In this newsletter, we will present a two-day tour (with one-night stay) to visit the must-see spots in Yokohama.

DAY 1

Start at Yokohama Sta.

30 min. from Haneda Airport
25 min. from Tokyo Station | 11 min. from Shin-Yokohama Sta. (bullet train)

① Chinatown —10 min. from Yokohama Station by train

Early lunch in Japan's largest Chinatown. We recommend Shatenki, which offers a porridge that is rich in taste and quite filling. You can also enjoy dim-sum, dumplings, wonton, fried rice, mapo tofu, and ramen in this area. Besides food, fortune-telling is also a popular activity. Find out what's in store for you in the future!

[Find out more](#)



② Gundam Factory —7 min. walk from Motomachi-Chukagai Station

Check out the 18-meter-high Gundam robot which can move its body!

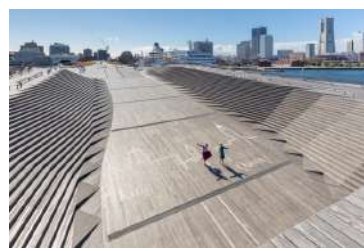
[Find out more](#)



③ Yamashita Park — 7 min. walk

Take a walk admiring the beautiful scenery of the Yokohama Port.

[Find out more](#)



④ Osanbashi Pier — 4 min. walk


Yokohama is Japan's main cruise departure and arrival point. The view of Yokohama including the garden of Yamashita Park seen from the sea side of Osanbashi is very beautiful. Enjoy the scenery of Yokohama where the cityscape and nature merge.

[Find out more](#)

⑤ Landmark Tower —25 min. walk from Osanbashi or 7 min. by taxi

Sky Garden, located on the 69th floor, offers a 360-degree panoramic view. At Sky Cafe, you can see the night view 273m above the ground. Commercial facilities such as Landmark Plaza and Queen's Square adjacent to the Landmark Tower, offer a variety of options to dine.

[Find out more](#)



STAY: Yokohama Royal Park Hotel

This luxury hotel is located on the 52nd to 67th floors of the Yokohama Landmark Tower. It features 8 restaurants and bars including "Sirius" on the 70th floor. At Yokohama Royal Park Hotel's Japanese Tea Ceremony Room Kaikoh-an, you can experience a full-fledged tea ceremony with a spectacular view of Yokohama Port.

[Find out more](#)

DAY 2



⑥ Sankeien Garden —25 min. from Sakuragicho Sta. to Honmoku Bus Stop by bus

Experience the traditional Japanese space at Sankeien Garden, where you can see seasonal flowers and trees and traditional buildings which were relocated from Kyoto, Kamakura and more.

[Find out more](#)

⑦ Cup Noodles Museum — 25 min. From Sankeien Garden to Sakuragicho Station, by bus + 15 min. walk

Handmake your own cup ramen!

[Find out more](#)



⑧ Shopping and lunch at the Red Brick Warehouse — 10 min. walk

Enjoy lunch and souvenir shopping in a modern and fashionable atmosphere. Red Brick Warehouse is a lively place where events are held outside the building. The recommended lunch spot is "Chano-ma Yokohama". There are seats where you can take off your shoes, lie down and relax while having lunch with a view of Yokohama Port. The specialty of the house is French toast with strawberries and condensed milk. In addition, the Red Brick Warehouse has lunch spots with a wide range of tastes from Japanese food to fast food such as Nana's green tea, Noge Yamaya fresh fish shop, and KUA'AINA.

[Find out more](#)



⑨ Yokohama Air Cabin —15 min. walk

Enjoy the night view of Yokohama from a different angle riding on a ropeway "YOKOHAMA AIR CABIN" that connects Sakuragicho Station in Yokohama City and Minato Mirai Unga (Canal) Park!

[Find out more](#)

⑩ Noge —10 min. walk from Sakuragicho Station

Experience Yokohama's local izakayas and jazz bars.

[Find out more](#)

Please note that the opening hours may vary due to COVID-19 related restrictions.